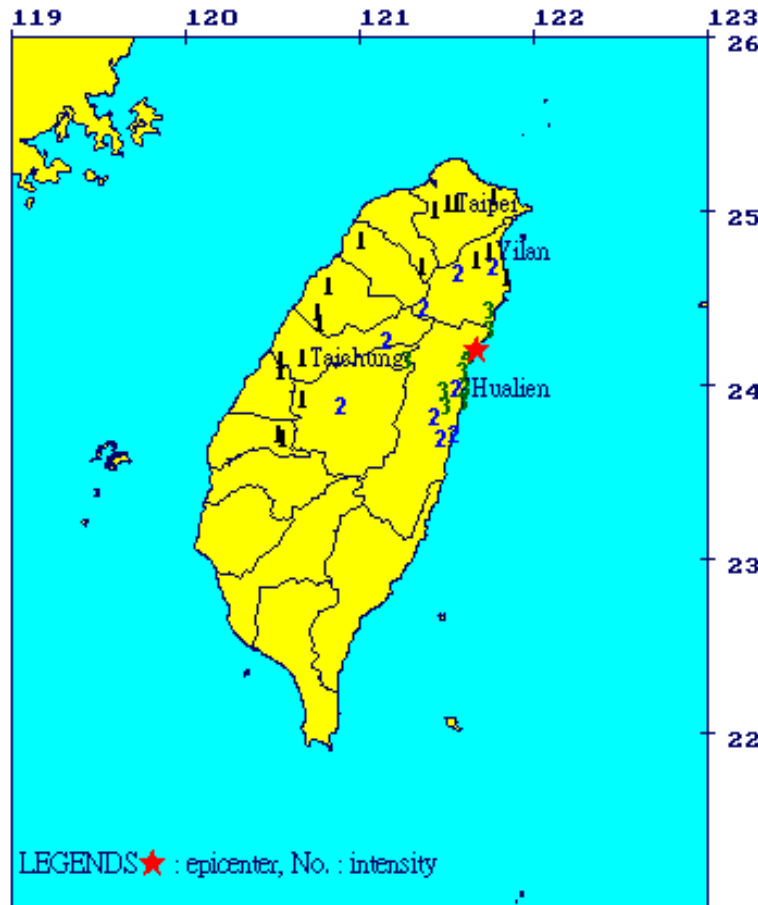


# Earthquake Information

## Summa



### CWB EARTHQUAKE REPORT

Earthquake No.: 98002

Origin time (Taiwan Standard Time: GMT+08:00):

1/4/2009 6:4:34.3 **Origin Time: 1/ 3/09 22: 4:34.2 (UT)**

25 Location: 24.19N, 121.68E  
i.e. 25.3 km NNE of Hualien City

Depth : 2.7 km

Magnitude(ML): 5.1

24 Local Largest Intensity :

Hualien County	4
Hualien City	3
Yilan County	3
Nantou County	3
23 Taichung County	2
Taoyuan County	1
Yilan City	1
Taipei County	1
Misoli County	1
Taipei City	1
22 Hsinchu County	1
Taichung City	1
Nantou City	1
Changhua City	1
Yunlin County	1
Misoli City	1
21 Douliou City	1

# Earthquake Information

## Summary:

Magnitude **Mw 7.5**

Region **NEAR THE NORTH COAST OF PAPUA, INDONESIA**

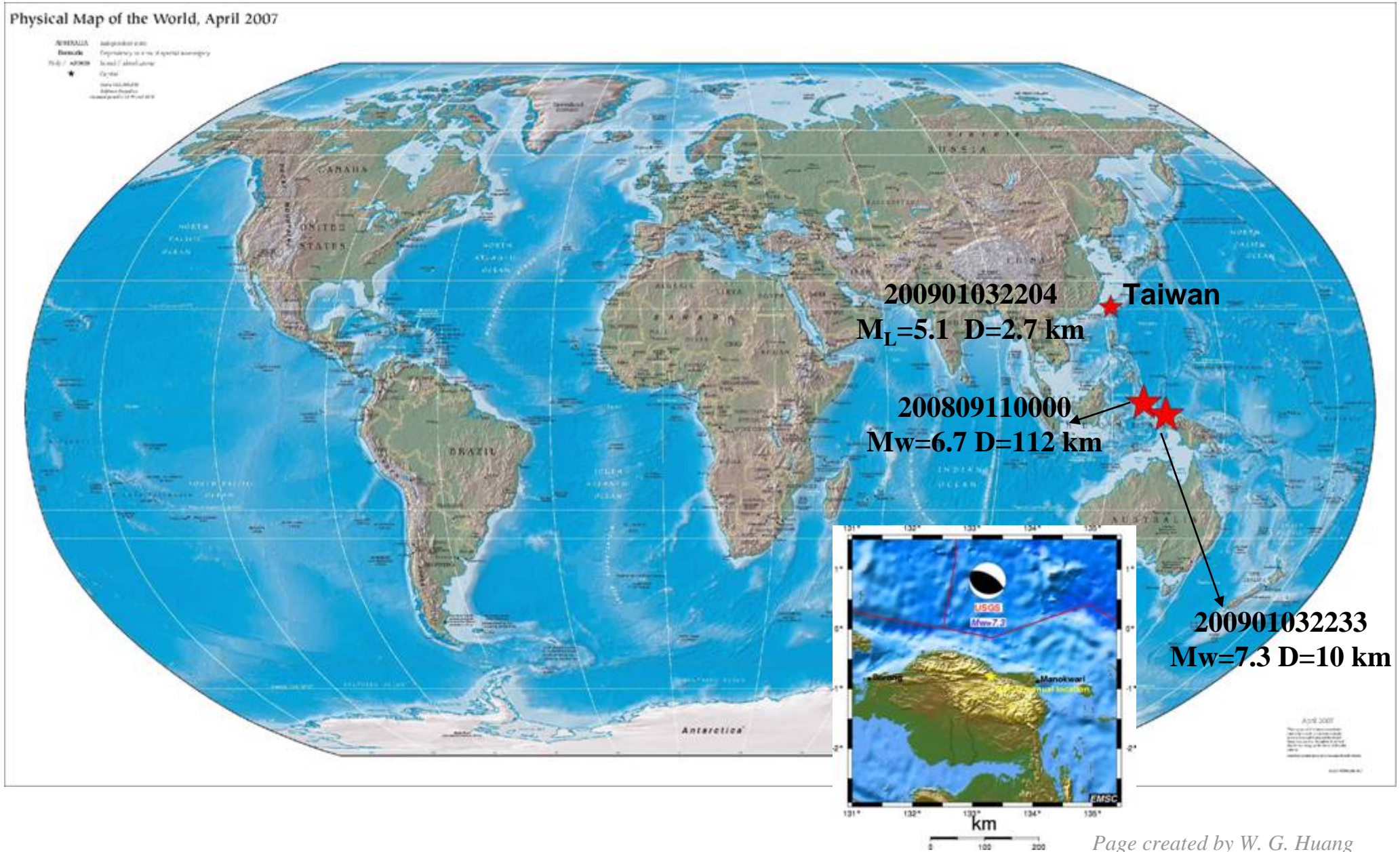
Date time **2009-01-03 at 22:33:37.9 UTC**

Location **0.78 S ; 133.28 E**

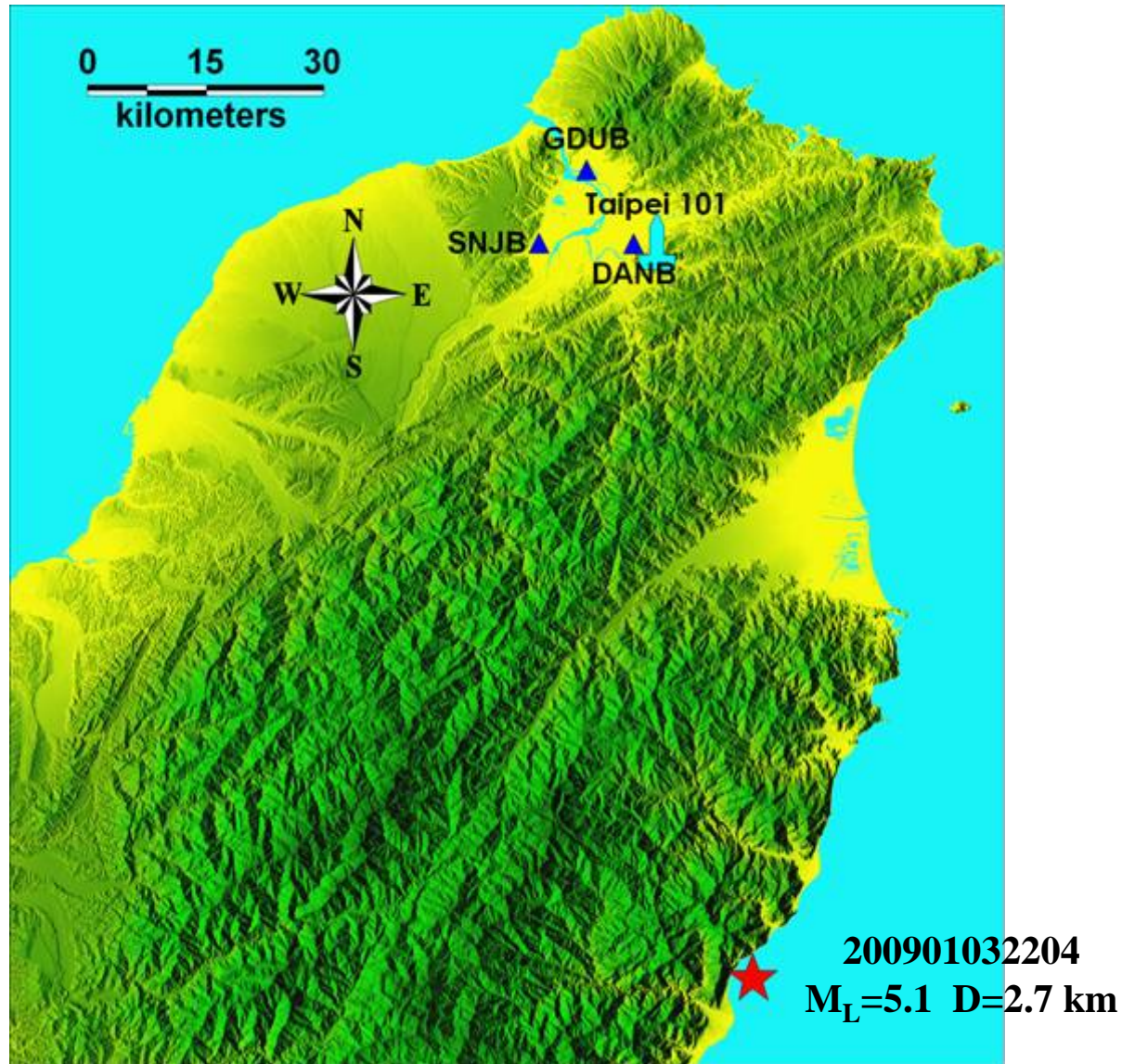
Depth **10 km**

Distances 221 km E Sorong (pop 125,535 ; local time 07:33 2009-01-04)  
89 km W Manokwari (pop 53,190 ; local time 07:33 2009-01-04)

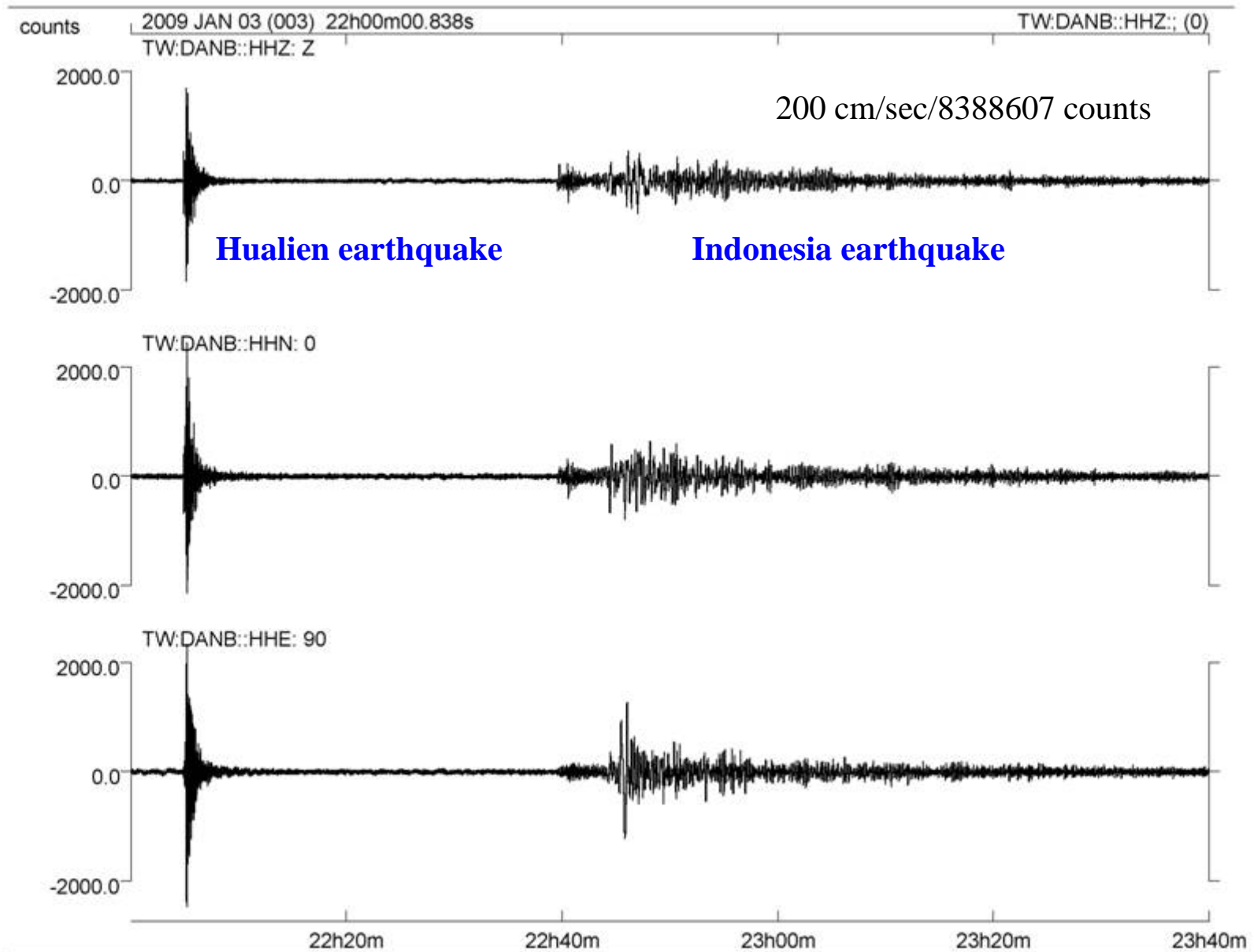
# Earthquake Parameters



## Broadband downhole network in Taipei Basin



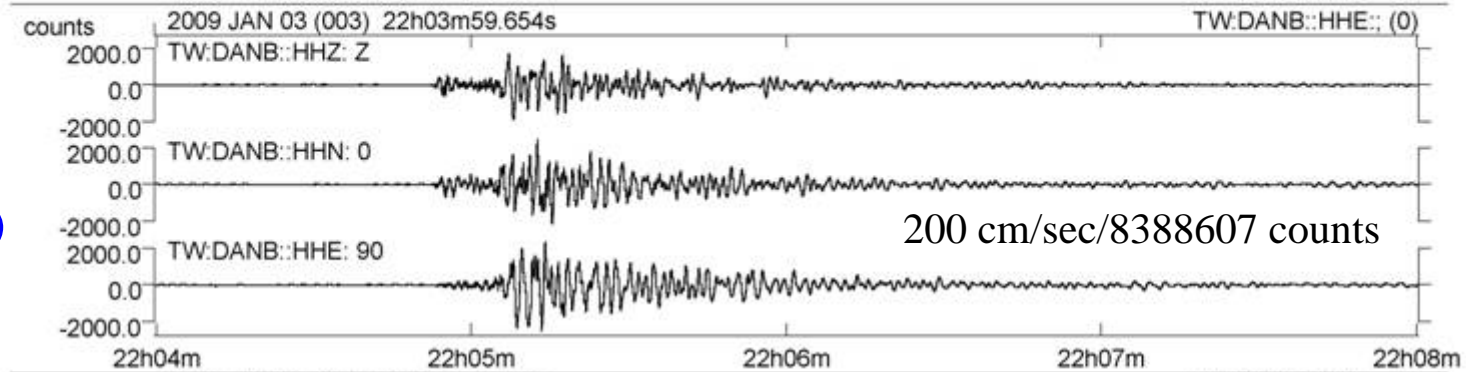
# The particle velocities recorded at DANB at level -90 meters.



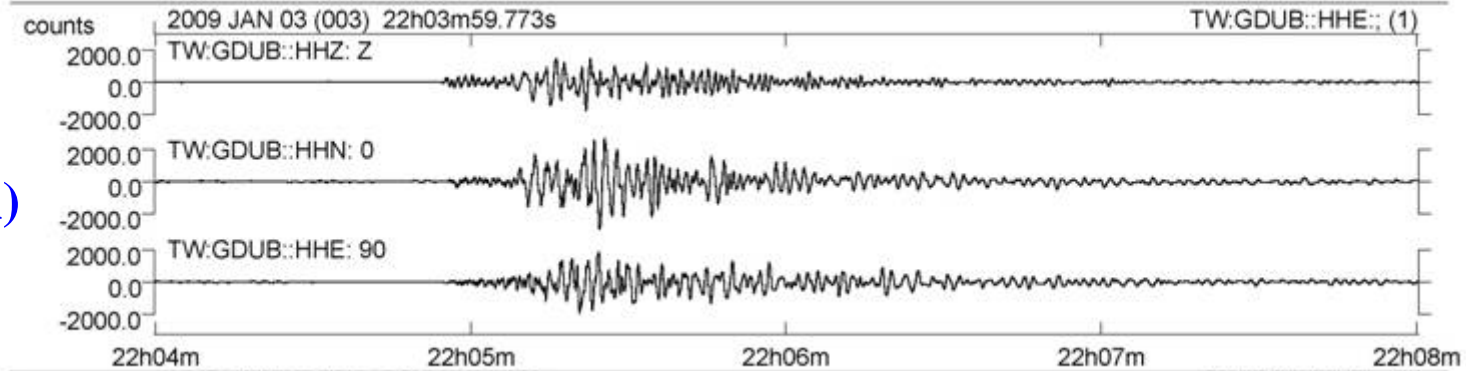
# The particle velocities recorded by broadband downhole network in Taipei Basin

## Hualien earthquake

**DANB**  
大安 (-90 m)



**GDUB**  
關渡 (-150 m)



**SNJB**  
新莊 (-100 m)

