

Earthquake Information

Summary:

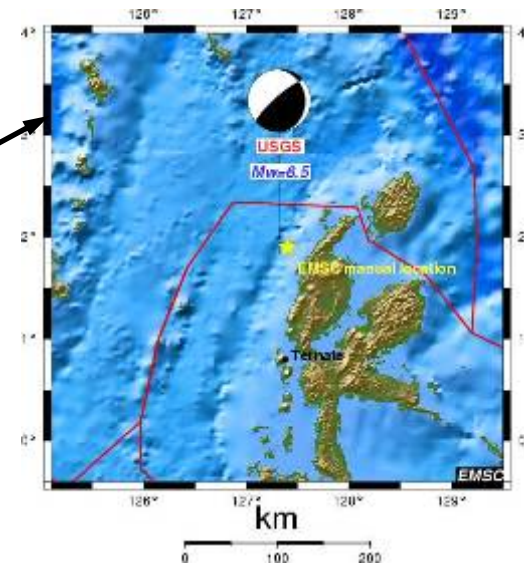
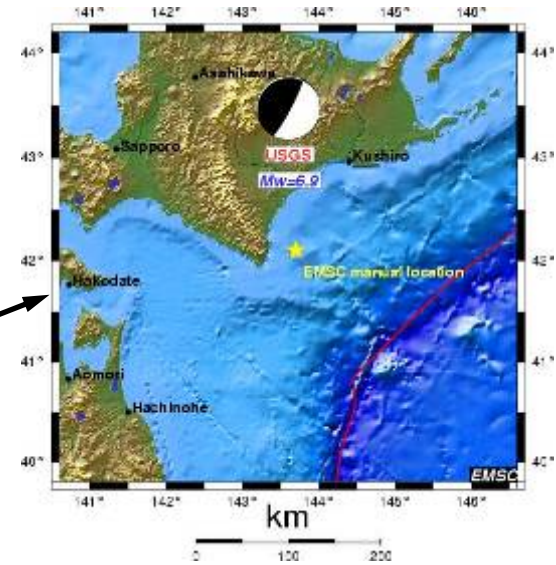
Magnitude **Mw 6.7**
Region **HALMAHERA, INDONESIA**

Date time **2008-09-11 at 00:00:02.8 UTC**
Location **1.95 N ; 127.44 E**
Depth **112 km**
Distances 129 km N Ternate (pop 101,731 ;
local time 09:00 2008-09-11)
139 km N Tidore (pop 46,149 ;
local time 09:00 2008-09-11)

Magnitude **Mw 7.0**
Region **HOKKAIDO, JAPAN
REGION**

Date time **2008-09-11 at 00:20:50.8
UTC**
Location **42.08 N ; 143.73 E**
Depth **30 km**
Distances 103 km SE Obihiro (pop
173,890 ; local time 09:20
2008-09-11)
111 km SE Otofuke (pop
40,944 ; local time 09:20
2008-09-11)

Earthquake Parameters



The particle velocities recorded at 101B at level -100 meters.

