

# Earthquake Information

Central Weather Bureau

## Summary:

Magnitude **Mw 7.0**

Region **VANUATU**

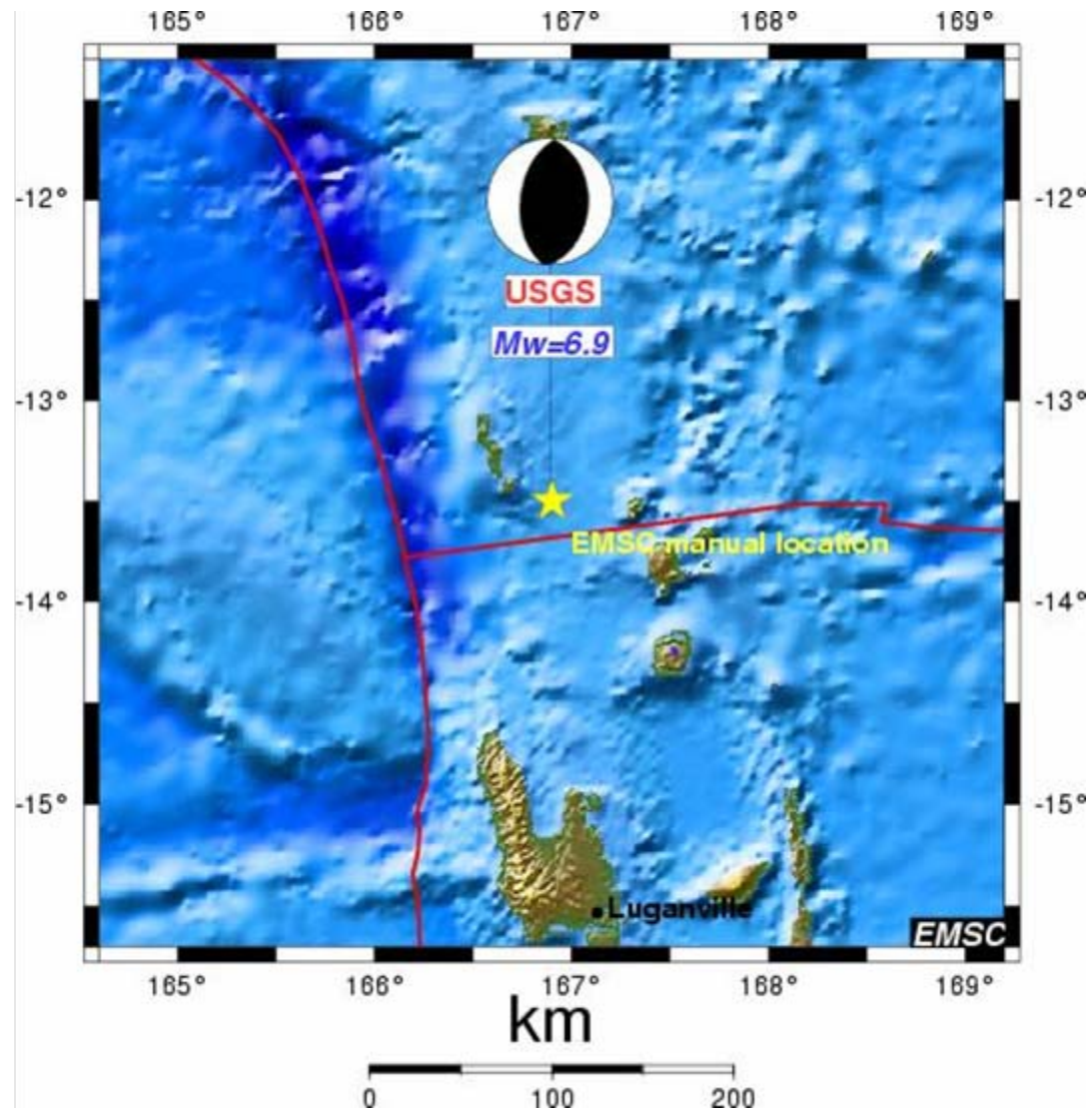
Date time **2008-09-08 at 18:52:08.8 UTC**

Location **13.43 S ; 166.98 E**

Depth **122 km**

Distances 1331 km W Suva (pop 199,455 ; local time 06:52 2008-09-09)  
232 km NW Luganville (pop 13,397 ; local time 05:52 2008-09-09)  
79 km NW Sola (pop 1,171 ; local time 05:52 2008-09-09)

# Earthquake Parameters



# The particle velocities recorded at SNJB at level -100 meters.

