

屏東地震的震源參數

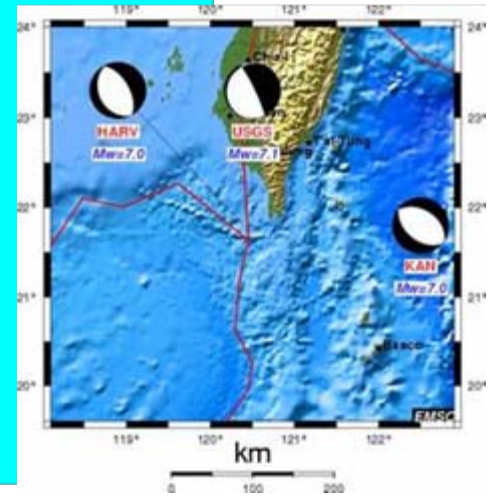
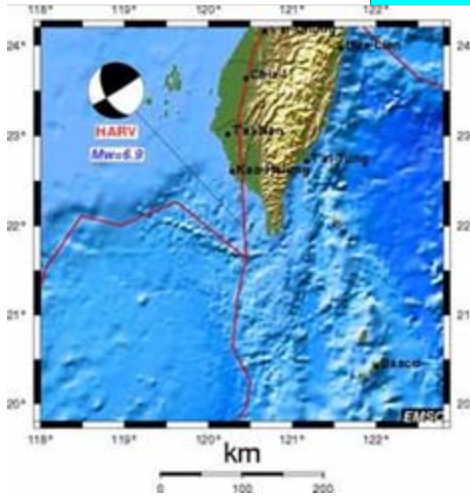
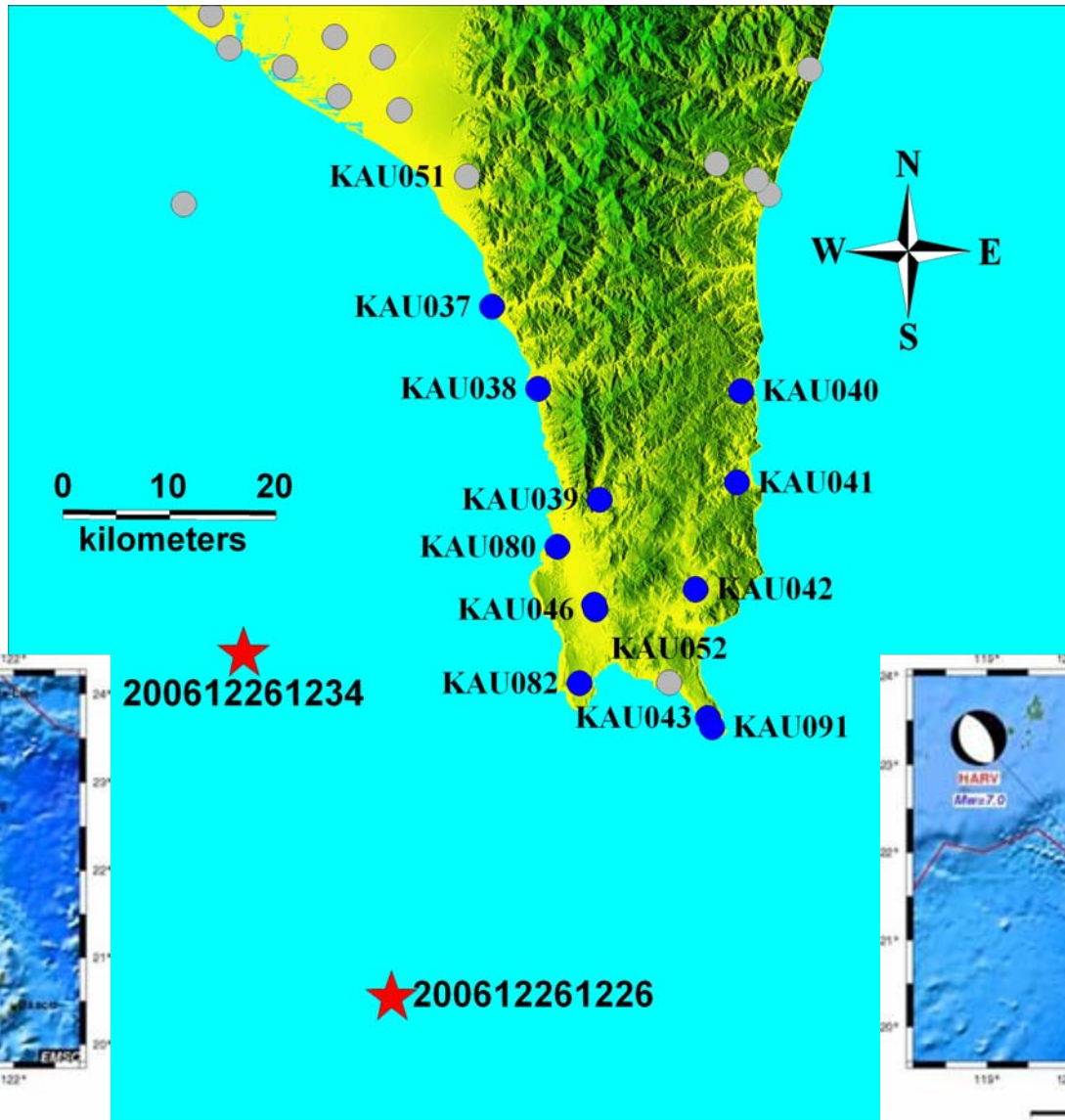
CWB gives the following parameters for the earthquake location and magnitude.

2006/12/26 12:26

規模 (M_L)	6.96 (M_w 7.1, USGS; M_w 7.1, ESMC; M_w 7.1, HARV)
發震時間	國際標準時間 2006/12/26 12:26:21.00
震央位置	北緯21.6783 度 ; 東經120.5533 度
震源深度	44.11 公里

2006/12/26 12:34

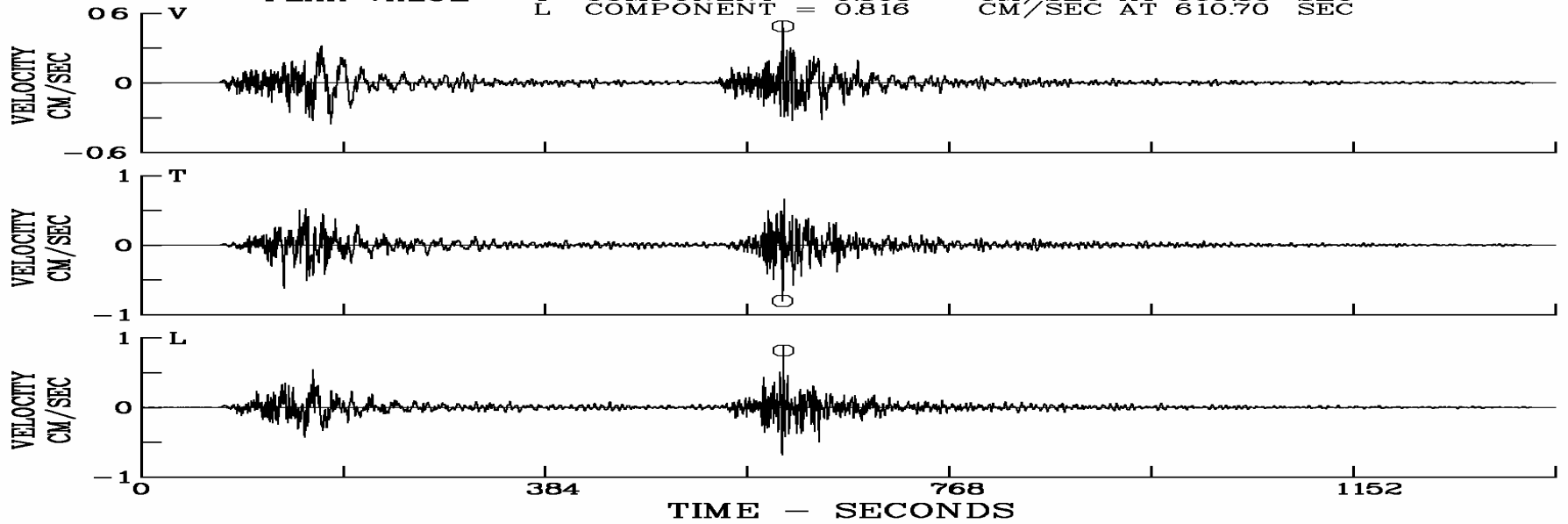
規模 (M_w)	6.99 (M_w 7.0, USGS; M_w 6.9, ESMC; M_w 6.9, HARV)
發震時間	國際標準時間 2005/12/26 12:34:15.13
震央位置	北緯21.9698 度 ; 東經120.4179 度
震源深度	50.22 公里



EARTHQUAKE 2006, 12, 26, 12, 26 UT

STATION DANB90

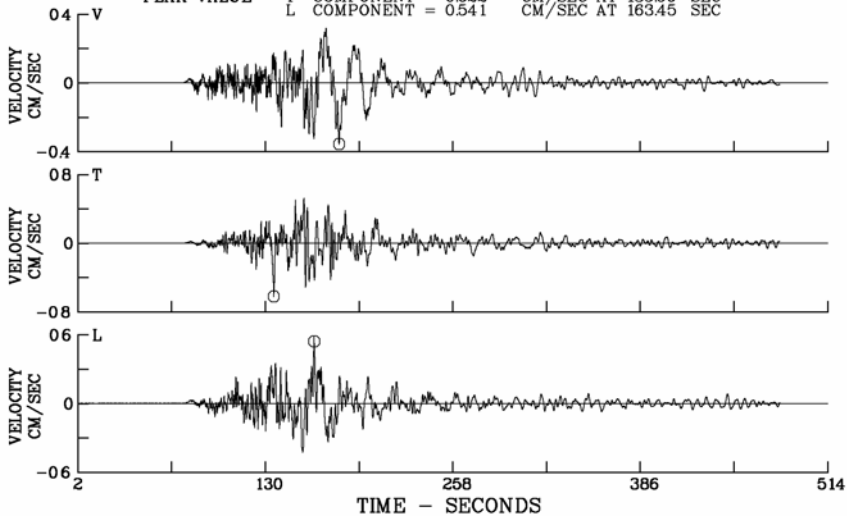
PEAK VALUE	V	COMPONENT	=	0.488	CM//SEC	AT	610.15	SEC
	T	COMPONENT	=	0.805	CM//SEC	AT	609.85	SEC
	L	COMPONENT	=	0.816	CM//SEC	AT	610.70	SEC



EARTHQUAKE 2006, 12, 26, 12, 26 UT

STATION DANB90

PEAK VALUE	V	COMPONENT	=	0.357	CM/SEC	AT	180.50	SEC
	T	COMPONENT	=	0.622	CM/SEC	AT	135.90	SEC
	L	COMPONENT	=	0.541	CM/SEC	AT	163.45	SEC



EARTHQUAKE 2006, 12, 26, 12, 34 UT

STATION DANB90

PEAK VALUE	V	COMPONENT	=	0.488	CM/SEC	AT	130.15	SEC
	T	COMPONENT	=	0.805	CM/SEC	AT	129.85	SEC
	L	COMPONENT	=	0.816	CM/SEC	AT	130.70	SEC

